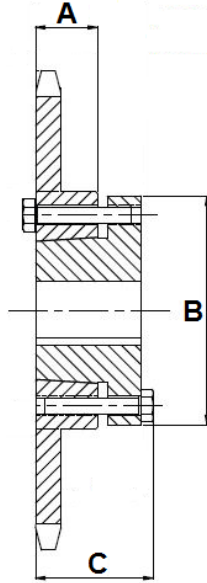


60 QD SPROCKETS



No. Teeth	Part Number	Mate Bushing	Outside Diameters		Center Hole	Dimensions		
			Outside Diameter	Pitch Diameter		A	B	C
11	60JA11H	JA	3"	2.662"	1.375"	0.625"	2.06"	1.125"
12	60JA12H	JA	3.25"	2.898"	1.375"	0.625"	2.06"	1.125"
13	60JA13H	JA	3.49"	3.134"	1.375"	0.625"	2.06"	1.125"
14	60SH14H	SH	3.74"	3.371"	1.871"	0.812"	2.68"	1.437"
15	60SH15H	SH	3.98"	3.607"	1.871"	0.812"	2.68"	1.437"
16	60SH16H	SH	4.22"	3.844"	1.871"	0.812"	2.68"	1.437"
17	60SDS17H	SDS	4.46"	4.082"	2.187"	0.75"	3.187"	1.50"
18	60SDS18H	SDS	4.7"	4.319"	2.187"	0.75"	3.187"	1.50"
19	60SDS19H	SDS	4.95"	4.557"	2.187"	0.75"	3.187"	1.50"
20	60SDS20H	SDS	5.19"	4.794"	2.187"	0.75"	3.187"	1.50"
21	60SDS21H	SDS	5.43"	5.032"	2.187"	0.75"	3.187"	1.50"
22	60SDS22H	SDS	5.67"	5.27"	2.187"	0.75"	3.187"	1.50"
23	60SDS23H	SDS	5.91"	5.508"	2.187"	0.75"	3.187"	1.50"
24	60SDS24H	SDS	6.15"	5.746"	2.187"	0.75"	3.187"	1.50"
25	60SDS25H	SDS	6.39"	5.984"	2.187"	0.75"	3.187"	1.50"
26	60SK26H	SK	6.63"	6.222"	2.812"	1.25"	3.87"	2.125"
27	60SK27H	SK	6.87"	6.46"	2.812"	1.25"	3.87"	2.125"
28	60SK28H	SK	7.11"	6.699"	2.812"	1.25"	3.87"	2.125"
30	60SK30H	SK	7.59"	7.175"	2.812"	1.25"	3.87"	2.125"
32	60SK32H	SK	8.07"	7.652"	2.812"	1.25"	3.87"	2.125"
35	60SK35H	SK	8.78"	8.367"	2.812"	1.25"	3.87"	2.125"
36	60SK36H	SK	9.02"	8.605"	2.812"	1.25"	3.87"	2.125"
40	60SK40H	SK	9.98"	9.559"	2.812"	1.25"	3.87"	2.125"
42	60SF42H	SF	10.46"	10.036"	3.125"	1.25"	4.625"	2.25"
45	60SF45H	SF	11.18"	10.752"	3.125"	1.25"	4.625"	2.25"
48	60SF48H	SF	11.89"	11.467"	3.125"	1.25"	4.625"	2.25"